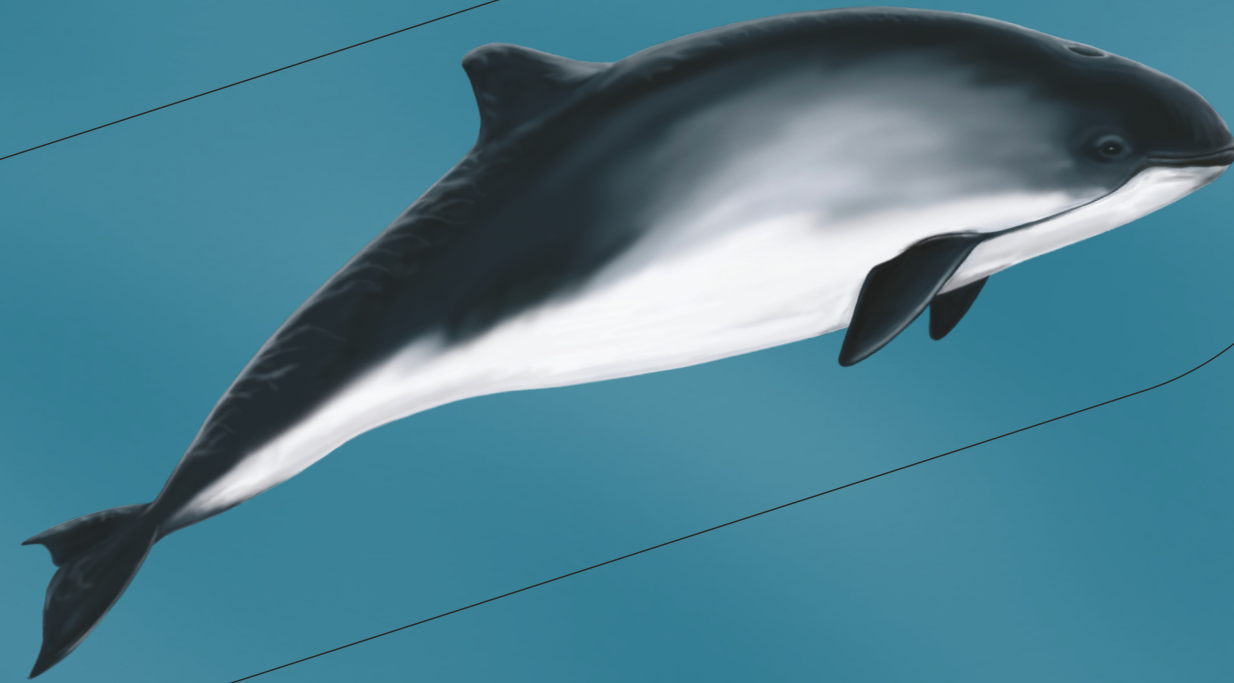
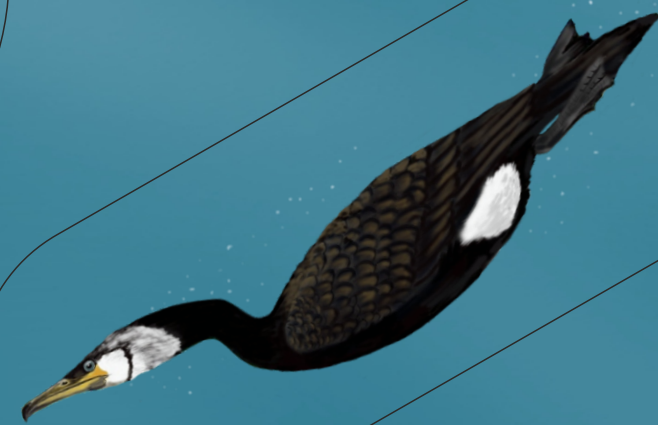


# THE BALTIC SEA ECOSYSTEM



HARBOUR PORPOISE



CORMORANT



CYANOBACTERIA



GREY SEAL



LONG-TAILED DUCK



LION'S MANE JELLYFISH



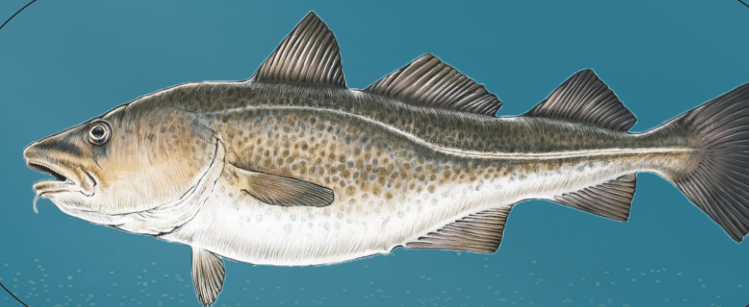
COMMON JELLYFISH



SPRATS



PERCH



COD



HERRINGS



SEAGRASS



BROWN SHRIMP



COMMON PRAWN



EUROPEAN PLAICE



BAY BARNACLES and BLUE MUSSELS



RED ALGAE



HARRIS MUD CRAB

Rys. Mikołaj Koss, Andrzej Krupa, Cezary Wójcik